

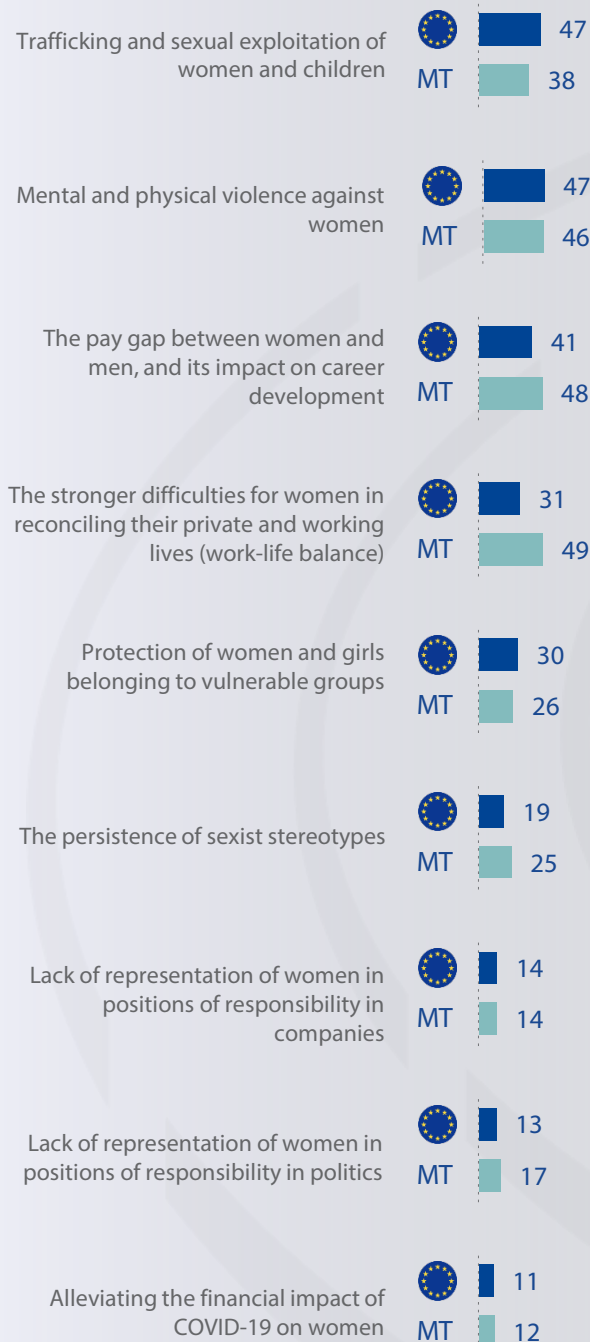
Women in times of COVID-19

Interviews with women: EU27 - 26741 | MT - 538
(Fieldwork: 25.01 - 02.03.2022) Methodology

Malta

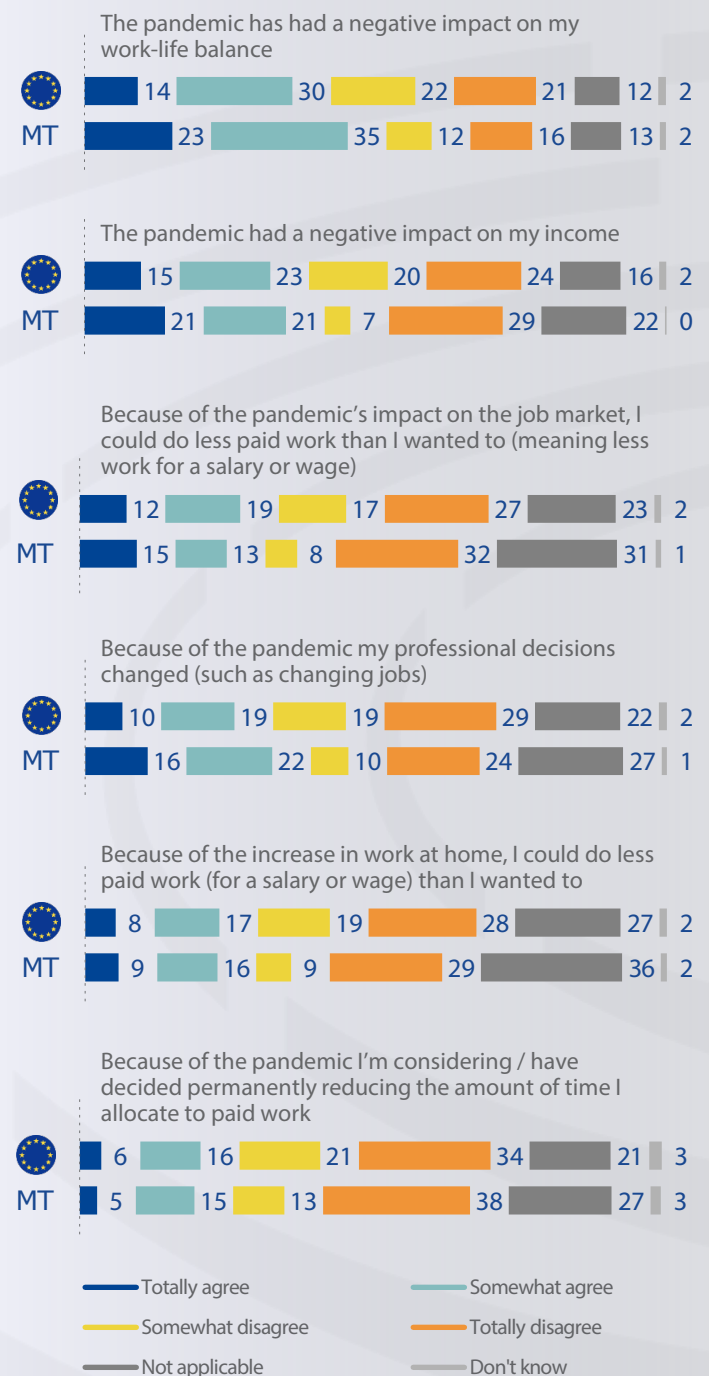
EP PRIORITIES FOR GENDER-RELATED ISSUES

q9 With a view to the role of the European Parliament, which of the following gender-related issues would you like the Members of Parliament to tackle as a priority? You can select up to three issues. (%)



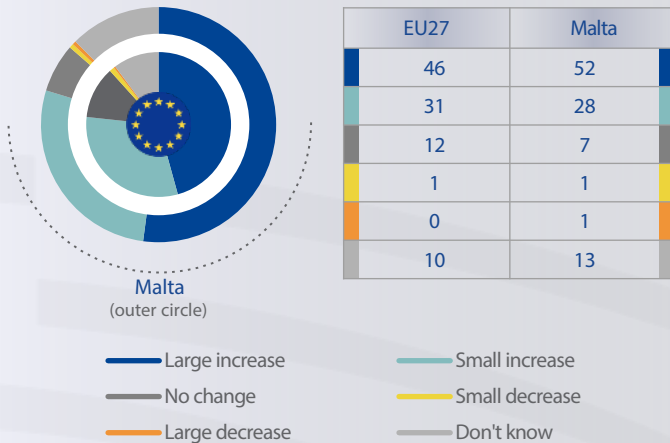
THE COVID-19 PANDEMIC AND WORK

q5 Do you agree or disagree with the following statements about the COVID-19 pandemic? (%)
Base: Women in employment



VIOLENCE AGAINST WOMEN IN THE COVID-19 PANDEMIC

q6 Do you think that the COVID-19 pandemic has led to an increase or decrease in physical and emotional violence against women in your country? (%)



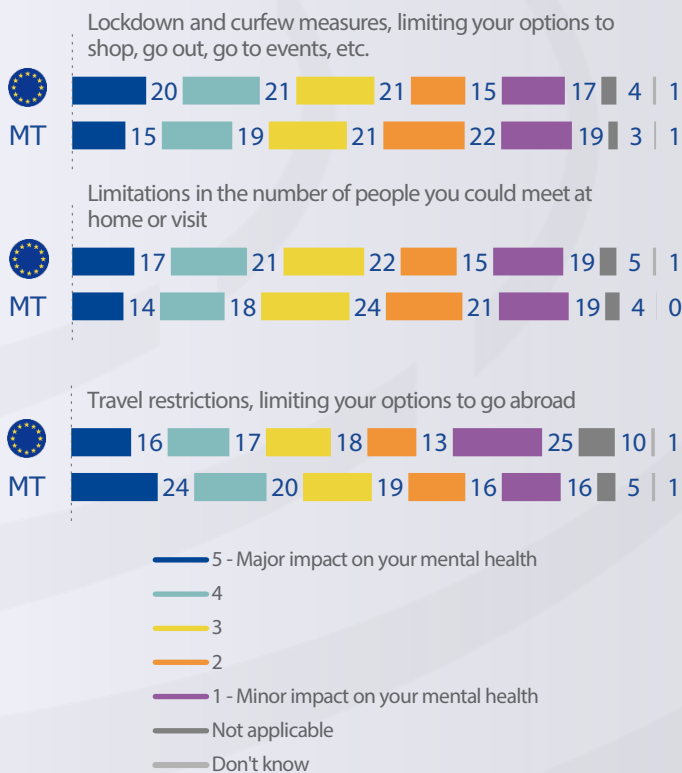
FEELINGS DURING THE COVID-19 PANDEMIC

q2 Since the start of the COVID-19 pandemic, with which of these feelings / situations have you identified the most? (Multiple answers allowed, % Top 3 responses)



THE COVID-19 PANDEMIC AND IMPACT ON MENTAL HEALTH

q1 [...] On a scale from 1 to 5, to what extent did these measures and their effects have a negative impact on your mental health? (%)



q3 What would you do or who would you go to if you were to experience a mental health issue such as stress or anxiety? (Multiple answers allowed, % Top 5 responses)

